

Joie Siegrist, President, Board of Education
Dr. Don Haddad, Superintendent of Schools

Educational Services Center
395 South Pratt Parkway
Longmont, Colorado 80501

DISTRICT VISION STATEMENT

To be an exemplary school district which inspires and promotes high standards of learning and student well-being in partnership with parents, guardians and the community.

DISTRICT MISSION STATEMENT

To educate each student in a safe learning environment so that they may develop to their highest potential and become contributing citizens.

ESSENTIAL BOARD ROLES

- Guide the superintendent
- Engage constituents
- Ensure alignment of resources
- Monitor effectiveness
- Model excellence

BOARD MEMBERS

- Jim Berthold, Secretary
- Meosha Brooks, Member
- Chico Garcia, Member
- Sarah Hurianek, Member
- Dr. Richard Martyr, Treasurer
- Karen Ragland, Vice President & Asst Secretary
- Joie Siegrist, President

PUBLIC COMMENT PROCESS

The Board of Education values community perspectives and the feedback from our parents, teachers, staff and community. During Board Meetings, the Board will hear up to 30 minutes of public comment on non-agenda items and 30 minutes of public comment on agenda-specific items.

- Each person is limited to three minutes of public comment
- The manner of your comments must be appropriate for the business meeting of the board.
- If you are speaking to a non-agenda item, you must limit your remarks to matters of public concern about the district.
- Concerns about the day-to-day operations of the district should first be referred through the proper administrative channels before it is presented to the board.

Learn more at <http://stvra.in/publiccomment>

1. CALL TO ORDER:

6:00 pm Regular Business Meeting

2. ADDENDUMS/CHANGES TO THE AGENDA:

3. VISITORS:

3.1 Toyota TECS Elite Presentation

3.2 Superintendent's Excellence in Education Awards

4. AUDIENCE PARTICIPATION:

5. SUPERINTENDENT'S REPORT:

6. REPORTS:

6.1. Mead High School Student Advisory Council Feeder Report

6.2. 2022-2026 District Enrollment Projections

7. CONSENT ITEMS:

7.1. Approval: Staff Terminations/Leaves

7.2. Approval: Staff Appointments

7.3. Approval: Approval of Minutes for the February 9, 2022 Regular Meeting, February 16, 2022 Study Session, February 23, 2022 Study Session and February 23, 2022 Regular Meeting

7.4. Approval: Approval of Recommendation to Hire Assistant Superintendent of Innovation

7.5. Approval: Approval of Recommendation to Hire Principal at Grand View Elementary

7.6. Approval: Approval of Recommendation to Hire Special Education Coordinator for the 2021/2022 School Year

7.7. Approval: Approval of Recommendation to Hire Assistant Principal at LaunchED

7.8. Approval: Approval of Second Reading Board Policy FEG - Construction Contracts Bidding and Awards

March 9, 2022

Joie Siegrist, President, Board of Education
Dr. Don Haddad, Superintendent of Schools

Educational Services Center
395 South Pratt Parkway
Longmont, Colorado 80501

- 7.9. Approval: Approval of Contract Award for Waterline Replacement at Longmont High School
- 7.10. Approval: Approval of Change Order 1 to CMGC for Skyline High School Turf

8. ACTION ITEMS:

- 8.1. Recommendation: Approval of Teacher Contracts/2022-2023 Non-Renewal Notices

9. DISCUSSION ITEMS:

10. ADJOURNMENT:

**Board of Education Meetings: Held at 395 South Pratt Parkway,
Board Room, unless otherwise noted:**

Wednesday, March 16	6:00 - 8:00 pm Study Session
Wednesday, April 13	6:00 - 8:00 pm Regular Meeting

MEMORANDUM

DATE: March 9, 2022

TO: Board of Education

FROM: Dr. Don Haddad, Superintendent of Schools

SUBJECT: Mead High School Report - High School Student Advisory Council
Strategic Priority – Rigorous, Well-Aligned Standards, Curriculum,
Instruction, and Assessment

PURPOSE

To provide students the opportunity to practice leadership skills and report out on the successes of Mead High School to the Board of Education.

BACKGROUND

The Student Advisory Council is comprised of 4-5 high school students from each of our high schools that were chosen by teachers and administrators. Mateo Gonzaga will be representing Mead High School at this Board Meeting. The Student Advisory Council was started by Dr. Haddad fifteen years ago so that students could give input to the superintendents about what students were feeling about the District.

MEMORANDUM

DATE: March 9, 2022

TO: Board of Education

FROM: Don Haddad, Ed. D. Superintendent of Schools

SUBJECT: District Enrollment Projections 2022-2026
Strategic Priority – Portfolio of 21st Century Instructional Focus
Schools and Robust Co-curricular Opportunities

PURPOSE:

To provide the Board of Education a report on enrollment projections for 2022-2026.

BACKGROUND:

A variety of factors continue to impact the SVVSD enrollment with potential for both accelerated growth and a more modest growth. The Planning Department has evaluated these indicators and trends to develop enrollment projections for the five-year period of 2022-2026 at a Low, Mid and High level.

ESTIMATED GROWTH

In the information that follows, factors that will impact growth in the following years are identified. Local and State economic forecasts were consulted along with birth rates, building projections, proposed development activity and State Demographer data. The continuing impact of the pandemic, especially in terms of students opting for on-line verses in-person is one that will require ongoing monitoring. The operation of LaunchEd as an official online school with the potential of adding out of district students will be an area to evaluate well into the summer.

Based on the known factors, a total growth for the district in 2022 is expected to be 290 students at the mid-level (31,806 without Pre-K). Charter schools project a growth of 119 students of this total. The low-level estimate for 2022 is an overall increase of 99 students while the high-level reflects a growth of 487 students.

Five years out, enrollment is expected to reach 33,952 students for an annual growth of 487 students. This correlates roughly to a housing growth of a little over 1000 new dwelling units per year in the district. This is a relatively conservative estimate based on local municipality projections for new housing.

REGIONAL SOURCES IN DEVELOPING PROJECTIONS:

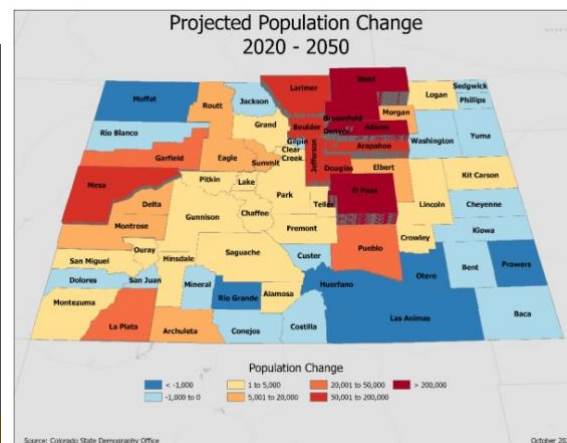
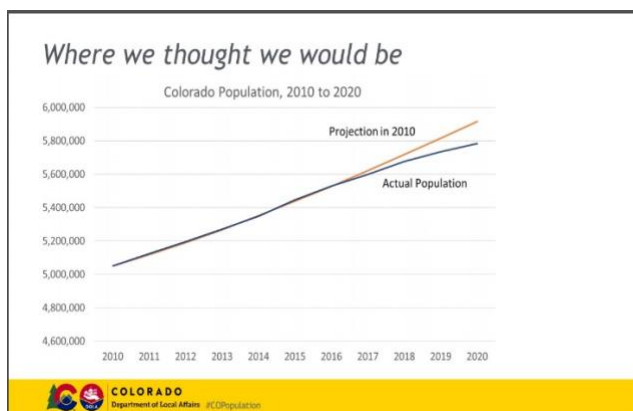
Longmont Elevate Report

From the Longmont Area Economic Development report and survey: “Because Longmont has made the investment to identify and strengthen our four distinct primary industry clusters, it is likely that Longmont will see a rise of at least 2% in GRP in 2021, despite lingering impacts from the pandemic. This somewhat rosy outlook is echoed in the 2021 ELEVATE survey responses. When asked about revenue and profitability trends at Longmont-based facilities over the next two years, 71% of respondents said that revenue and profitability were increasing, while 12% reported that they were staying the same. Another 12% selected “No Response,” while only 5% reported declining revenues and profits. If these trends are broadly applicable to Longmont’s primary industry base, which accounts for over 25% of the GRP in the region, it would contribute to a general upward trend between now and 2023.” 12.31.21

Smart Asset - Longmont ranked No. 16 and Denver ranked No. 23 on SmartAsset’s 2021 list of top 40 boomtowns, based on an analysis of 500 U.S. cities. Fort Collins and Greeley also were included on the list at No. 38 and No. 40, respectively. The study considered metrics including population change, GDP growth, business establishment growth, housing growth, unemployment rate, and change in household income. All four Colorado cities ranked in the top 20 percent for GDP growth, growth in the number of local businesses, and growth in the number of local housing units.

Colorado State Demographer

While the Colorado State Demographer Office projections in 2010 did not meet expectations for 2020 growth was faster than the nation and the 6th fastest among the 50 states at 14.8%



Colorado is expected to reach 7.5 million residents in 2050 (5.8 million in 2020). This in annual growth of +60,000 residents per year or .09% growth rate. +90 % of the growth is expected in the Front Range. St. Vrain, especially the eastern portion lies within one of the faster growth areas of the state

In addition, their research shows, “COVID-19 slowed Colorado’s population growth in the short run, with continued slowing births, increased deaths, and slowing migration.

International migration contributes 20%-25% of Colorado's total net migration. [However] There are signs that international migration will start to return in late 2021 and into 2022. The demand for labor should also draw more workers from abroad depending on U.S. immigration policies and staffing for visas. Population growth in 2021 is projected to remain around 45,500, or a 0.8% growth rate, but then return to pre-pandemic levels around 61,000 in 2022 and increase slightly to the low- to mid-70,000 through 2025. Through 2025, the forecast is for natural increase to remain in the low-20,000s and net migration to remain in the mid-40,000s to the low-50,000s. Growth is forecast to remain fairly strong from 2025-2030, driven by the retirements of baby boomers and the need for replacement workers. After 2030, population growth is expected to slow significantly due to a slowing economy, continued slowing birth rates, an aging population, slowing labor force growth, and slowing international immigration. Although Colorado's population growth is forecast to slow over the next few decades, it is projected to continue to outpace the nation, growing at roughly twice the national rate."

2022 Colorado Leeds Business Forecast:

"Employment in Colorado is estimated to have increased 3.3%, or 87,600 jobs in 2021, once data revisions take effect in March 2022, illustrating a strong recovery from the devastating pandemic-induced recession that struck the state last year. Colorado will mark job growth in 2022, increasing another 73,900 (2.7%), effectively recouping total jobs lost due to the pandemic recession."

The possible headwinds to growth and recovery: the possibility of additional impacts of Covid; Widespread worker shortages across all industries; inflation; supply chain issues; Housing shortages and costs; Lower birth rates for the state; Remote workers; and Availability of water.

Colorado Futures Center - ColoradoCast – a new short-term economic forecast that predicts monthly changes up to six months out – Colorado's economy returned to pre-pandemic GDP levels in September 2021 and is projected to continue to expand through their April 2022 forecast horizon. Colorado's economy is projected to grow at a 6.45 percent annual rate in April 2022, a slowdown from the more robust annualized rate of growth at the end of 2021, but still high relative to historic standards.

BACKGROUND INFORMATION AND TABLES:

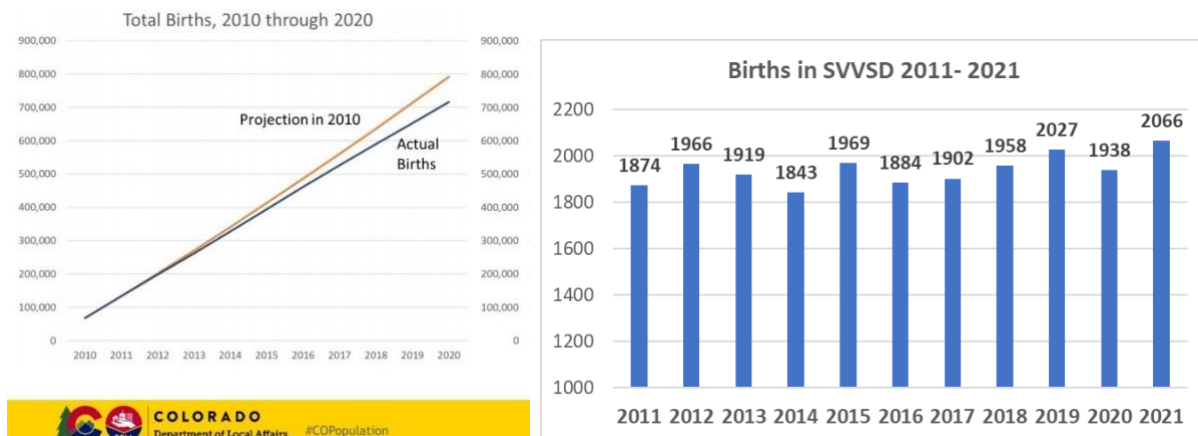
Building Permits:

The communities within the District are projecting an increase in new housing development in 2022 (+258 more homes than last year, 11.3% increase). This will be a factor in the growth rate of enrollment in St. Vrain in the coming years. Longmont has issued the largest number of permits for new housing since 2008, however a larger percentage has been for multi-family recently which has a lower student yield than single family units. The other communities are primarily building single family units.

Building Permits	Broomfield	Dacono	Erie	Firestone	Frederick	Longmont	Lyons	Mead	Weld County	Total
2008	0	0	165	85	54	112	9	39	8	472
2009	0	0	103	88	24	62	3	25	6	311
2010	0	0	119	110	57	106	5	22	8	427
2011	0	0	107	86	103	61	1	72	0	430
2012	0	0	147	54	229	262	12	49	3	756
2013	0	10	171	76	202	253	8	6	14	740
2014	28	52	230	129	159	440	7	96	20	1161
2015	70	80	287	281	238	409	0	18	6	1389
2016	91	46	332	281	196	1003	6	12	0	1967
2017	85	23	284	299	228	1008	11	33	10	1981
2018	158	69	473	453	178	1272	7	5	21	2636
2019	144	57	396	350	292	943	3	10	19	2214
2020	143	53	282	252	364	939	2	42	25	2102
2021	176	0	490	305	331	630	2	334	21	2289
2022*	274	0	486	304	363	847	2	251	20	2547
Total	1169	390	4072	3153	3018	8347	78	1014	181	21422
Percent	5.5%	1.8%	19.0%	14.7%	14.1%	39.0%	0.4%	4.7%	0.8%	
*Estimate	7.7%	0.0%	21.4%	13.3%	14.5%	27.5%	0.1%	14.6%	0.9%	

Birth Data:

The Colorado State Demographer projected lower birth numbers during the pandemic. This played out for the state as a whole with a decline of -4.2% in the second half of 2020. This decline was expected to continue in 2021 before returning to pre-pandemic levels in 2022. Based on State Health Dept data, the St. Vrain area did not see a drop in births in 2021. The number of births went from 1,938 births to 2,066 in 2021. The gain of 200-300 students as these yearly births turn into kindergarten students points out the significant in migration that is occurring in St. Vrain.



Proposed Housing Units in Developments Under Review

Both the number and housing units proposed, received by the Planning Department increased from 2020 to 2021. The largest projects are in the Erie and Mead Feeders. The potential of 14,848 units were included in the projects for 2021. At current building rates this could represent a 7-year buildout but certainly it creates many more lots available for development.

Housing Units Proposed in Developments	LHS Feeder	NHS Feeder	SCHS Feeder	SHS Feeder	EHS Feeder	FHS Feeder	LM/S Feeder	MHS Feeder	Total
2016	6	466	570	146	1484	1248	1	817	4738
2017	19	1	320	624	1921	192	1	978	4056
2018	50	214	399	381	5413	2319	4	4301	13081
2019	357	247	889	644	2179	1744	2	4879	10941
2020	88	213	298	112	5696	1127	19	2571	10124
2021	32	2372	313	374	5970	1677	1	4109	14848
Total	552	3513	2789	2281	22663	8307	28	17655	42940
Some duplication is possible from year to year as projects move forward in the review process									

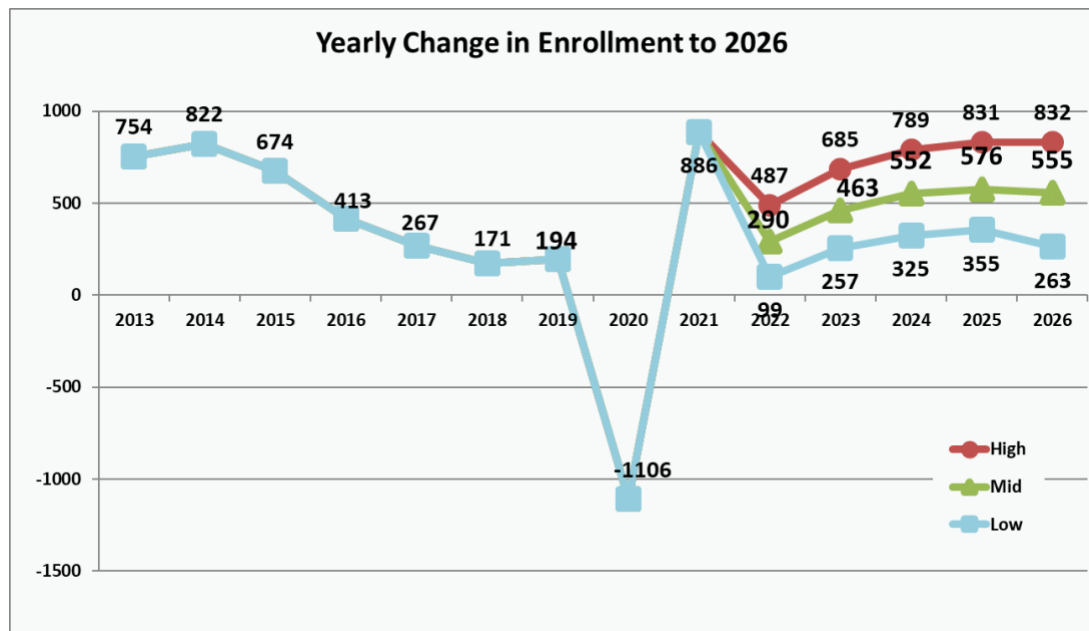
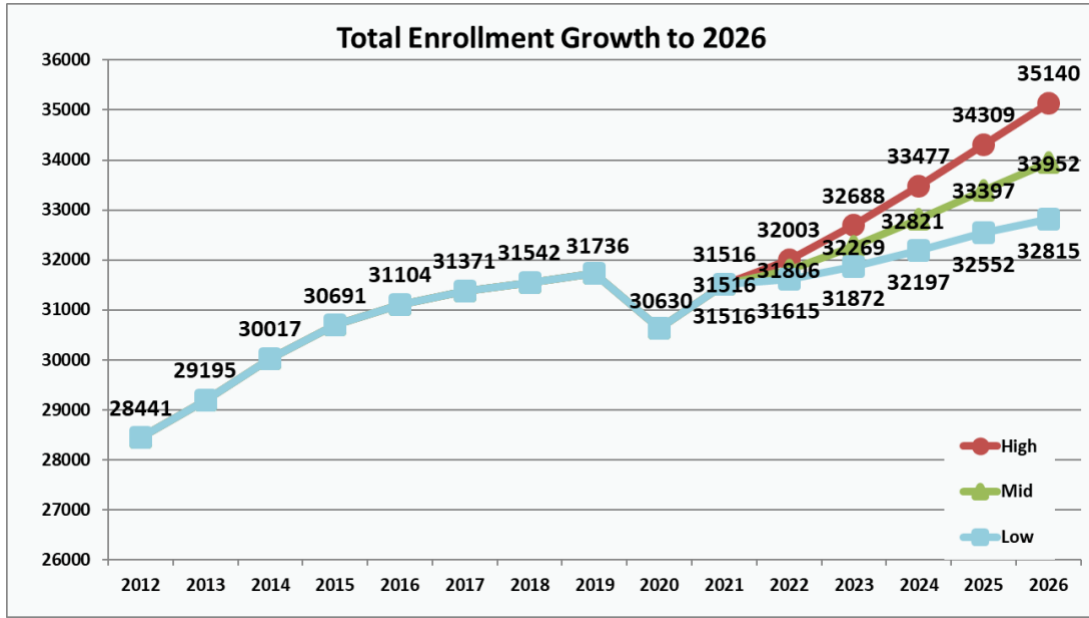
Boulder – Weld – Colorado 2021-2026

Each of the counties that St. Vrain resides in and have an increasing rate of growth over the next five years based on estimates from the Colorado State Demographer.

COUNTY	YEAR	Population	Change	Births	Deaths	Net Migration	Growth
Boulder County	2021	332,897	2,037	2,466	2,128	1,699	
	2022	334,017	1,120	2,595	2,130	655	0.3%
	2023	335,342	1,325	2,622	2,179	881	0.4%
	2024	337,297	1,955	2,662	2,230	1,522	0.6%
	2025	339,361	2,064	2,706	2,285	1,642	0.6%
	2026	342,171	2,811	2,764	2,342	2,389	0.8%
Growth		9,274		13,349	11,166	7,089	
COUNTY	YEAR	Population	Change	Births	Deaths	Net Migration	Growth
Weld County	2021	340,018	8,834	4,432	2,266	6,668	
	2022	347,860	7,842	4,410	2,086	5,518	2.3%
	2023	356,699	8,840	4,542	2,141	6,438	2.5%
	2024	364,877	8,177	4,660	2,199	5,716	2.3%
	2025	373,613	8,736	4,791	2,258	6,203	2.4%
	2026	384,733	11,121	4,975	2,321	8,466	3.0%
Growth		44,715		23,378	11,005	32,341	
STATE	YEAR	Population	Change	Births	Deaths	Net Migration	Growth
Colorado	2021	5,831,162	48,247	61,929	46,464	32,782	
	2022	5,892,723	61,561	63,001	40,966	39,525	1.1%
	2023	5,963,969	71,246	64,036	41,720	48,930	1.2%
	2024	6,035,249	71,280	65,058	42,515	48,737	1.2%
	2025	6,110,279	75,030	66,144	43,355	52,241	1.2%
	2026	6,189,404	79,125	67,286	44,246	56,085	1.3%
Growth		358,242		325,525	212,802	245,518	

Projections 2022-2026

Enrollment Projections for St. Vrain Valley School District 2022-2026																
2012 2013 2014 2015 2016 2017 2018 2019 2020 2021												2022	2023	2024	2025	2026
Total Enrollment	Low											31615	31872	32197	32552	32815
	Mid	28441	29195	30017	30691	31104	31371	31542	31736	30630	31516	31806	32269	32821	33397	33952
	High											32003	32688	33477	34309	35140
Mid-level Growth Rate			2.7%	2.8%	2.2%	1.3%	0.9%	0.5%	0.6%	-3.5%	2.9%	0.9%	1.5%	1.7%	1.8%	1.7%
2012 2013 2014 2015 2016 2017 2018 2019 2020 2021												2022	2023	2024	2025	2026
Enrollment Growth	Low											99	257	325	355	263
	Mid		754	822	674	413	267	171	194	-1106	886	290	463	552	576	555
	High											487	685	789	831	832



				Growth	Percent
Enrollment by Feeder	2016	2021	2026	2016-26	of District 2026
ERIE TOTAL	3975	5668	6586	2611	19%
FREDERICK TOTAL	3731	3851	4222	491	12%
LYONS TOTAL	734	630	670	-64	2%
MEAD TOTAL	2686	2766	3163	477	9%
NIWOT TOTAL	2974	2570	2663	-311	8%
LONGMONT TOTAL	4174	3664	3763	-411	11%
SILVER CREEK TOTAL	3571	3265	3451	-120	10%
SKYLINE TOTAL	4695	4163	4274	-421	13%
CHARTER TOTAL	3210	3137	3385	175	10%
ALTERNATIVE	1354	1802	1775	421	5%
TOTAL	31104	31516	33952	2848	
		412	2436		

ATTACHMENTS: Mid, Low and High estimates of 2020-2024 projections by school.
Development Referral Master List 2021. Recent Residential Development Map

Enrollment Projections 2022-2026

Mid-Level for Board of Education

ELEMENTARY SCHOOLS	Est. Capacity	2019	2020	2021	2021 Capacity	2022	2022 Capacity	2023	2023 Capacity	2024	2024 Capacity	2025	2025 Capacity	2026	2026 Capacity
Alpine	564	417	361	347	62%	344	61%	345	61%	351	62%	357	63%	360	64%
Growth rate			-13.43%	-3.88%			-0.86%		0.29%		1.74%		1.71%		0.84%
Black Rock	637	539	518	553	87%	583	92%	589	92%	593	93%	598	94%	609	96%
Growth rate			-3.90%	6.76%			5.42%		1.03%		0.68%		0.84%		1.84%
Blue Mountain	662	585	522	513	77%	516	78%	530	80%	540	82%	556	84%	569	86%
Growth rate			-10.77%	-1.72%			0.58%		2.71%		1.89%		2.96%		2.34%
Burlington	490	369	311	289	59%	292	60%	300	61%	312	64%	321	66%	331	68%
Growth rate			-15.72%	-7.07%			1.04%		2.74%		4.00%		2.88%		3.12%
Centennial	515	529	489	485	94%	492	96%	505	98%	520	101%	541	105%	561	109%
Growth rate			-7.56%	-0.82%			1.44%		2.64%		2.97%		4.04%		3.70%
Central	466	346	282	309	66%	307	66%	304	65%	296	64%	304	65%	317	68%
Growth rate			-18.50%	9.57%			-0.65%		-0.98%		-2.63%		2.70%		4.28%
Columbine	515	259	240	227	44%	221	43%	225	44%	235	46%	240	47%	242	47%
Growth rate			-7.34%	-5.42%			-2.64%		1.81%		4.44%		2.13%		0.83%
Eagle Crest	662	544	457	403	61%	408	62%	410	62%	422	64%	440	66%	457	69%
Growth rate			-17.82%	-15.99%			1.24%		0.49%		2.93%		4.27%		3.86%
Erie	539	302	299	307	57%	323	60%	328	61%	340	63%	361	67%	384	71%
Growth rate			-0.99%	2.68%			5.21%		1.55%		3.66%		6.18%		6.37%
Fall River	564	483	462	452	80%	446	79%	450	80%	459	81%	465	82%	467	83%
Growth rate			-4.35%	-2.16%			-1.33%		0.90%		2.00%		1.31%		0.43%
Grand View	612	325	340	386	63%	417	68%	425	69%	438	72%	449	73%	471	77%
Growth rate			4.62%	13.53%			8.03%		1.92%		3.06%		2.51%		4.90%
Highlands	625			219		277	44%	342	55%	357	57%	374	60%	392	63%
							26.48%		23.47%		4.39%		4.76%		4.81%
Hygiene	417	308	289	293	70%	297	71%	310	74%	312	75%	319	76%	322	77%
Growth rate			-6.17%	1.38%			1.37%		4.38%		0.65%		2.24%		0.94%
Indian Peaks	466	282	263	230	49%	221	47%	218	47%	228	49%	236	51%	239	51%
Growth rate			-6.74%	-12.55%			-3.91%		-1.36%		4.59%		3.51%		1.27%
Legacy	588	528	456	446	76%	445	76%	456	78%	468	80%	488	83%	505	86%
Growth rate			-13.64%	-2.19%			-0.22%		2.47%		2.63%		4.27%		3.48%
Longmont Estates	466	317	284	280	60%	289	62%	293	63%	299	64%	308	66%	312	67%
Growth rate			-10.41%	-1.41%			3.21%		1.38%		2.05%		3.01%		1.30%
Lyons	319	288	244	264	83%	260	82%	257	81%	260	82%	267	84%	270	85%
Growth rate			-15.28%	8.20%			-1.52%		-1.15%		1.17%		2.69%		1.12%
Mead	637	603	537	665	104%	707	111%	728	114%	740	116%	758	119%	772	121%
Growth rate			-10.95%	23.84%			6.32%		2.97%		1.65%		2.43%		1.85%
Mt View	368	255	236	234	64%	229	62%	230	63%	245	67%	245	67%	246	67%
Growth rate			-7.45%	-0.85%			-2.14%		0.44%		6.52%		0.00%		0.41%
Niwot	539	419	378	369	68%	351	65%	350	65%	361	67%	360	67%	365	68%
Growth rate			-9.79%	-2.38%			-4.88%		-0.28%		3.14%		-0.28%		1.39%
Northridge	490	289	251	274	56%	278	57%	266	54%	272	56%	278	57%	282	58%
Growth rate			-13.15%	9.16%			1.46%		-4.32%		2.26%		2.21%		1.44%
Prairie Ridge	441	454	436	430	98%	428	97%	438	99%	460	104%	474	107%	487	110%
Growth rate			-3.96%	-1.38%			-0.47%		2.34%		5.02%		3.04%		2.74%
Red Hawk	637	544	547	561	88%	574	90%	579	91%	583	92%	592	93%	601	94%
Growth rate			0.55%	2.56%			2.32%		0.87%		0.69%		1.54%		1.52%
Rocky Mt	441	344	325	309	70%	315	71%	320	73%	328	74%	331	75%	333	76%
Growth rate			-5.52%	-4.92%			1.94%		1.59%		2.50%		0.91%		0.60%
Sanborn	466	333	291	240	52%	240	52%	240	52%	248	53%	250	54%	256	55%
Growth rate			-12.61%	-17.53%			0.00%		0.00%		3.33%		0.81%		2.40%
Soaring Heights	750	695	706	652	87%	684	91%	708	94%	719	96%	734	98%	746	99%
Growth rate			1.58%	-7.65%			4.91%		3.51%		1.55%		2.09%		1.63%
Thunder Valley K-5	625	543	487	512	82%	527	84%	538	86%	549	88%	555	89%	566	91%
			-10.31%	5.13%			2.93%		2.09%		2.04%		1.09%		1.98%
Timberline K-5	750	481	469	461	61%	437	58%	448	60%	457	61%	464	62%	467	62%
			-2.49%	-1.71%			-5.21%		2.52%		2.01%		1.53%		0.65%
SUB TOTAL	14626	11381	10480	10710	73%	10908	75%	11132	76%	11392	78%	11665	80%	11929	82%
CHANGE			-901	230		198		224		260		273		264	
Growth rate			-7.92%	2.19%		1.85%		2.05%		2.34%		2.40%		2.26%	

Enrollment Projections 2022-2026

Mid-Level for Board of Education

SECONDARY SCHOOLS	Est. Capacity	2019	2020	2021	2021 Capacity	2022	2022 Capacity	2023	2023 Capacity	2024	2024 Capacity	2025	2025 Capacity	2026	2026 Capacity
Altona Middle	840	830	794	795	95%	803	96%	810	96%	818	97%	824	98%	832	99%
Growth rate			-4.34%	0.13%			1.01%		0.87%		0.99%		0.73%		0.97%
Coal Ridge Middle	840	823	816	819	98%	832	99%	840	100%	851	101%	858	102%	870	104%
Growth rate			-0.85%	0.37%			1.59%		0.96%		1.31%		0.82%		1.40%
Erie Middle	810	826	790	782	97%	765	94%	788	97%	812	100%	831	103%	861	106%
Growth rate			-4.36%	-1.01%					3.01%		3.05%		2.34%		3.61%
Erie High	1456	1467	1609	1713	118%	1803	124%	1849	127%	1888	130%	1921	132%	1943	133%
Growth rate			9.68%	6.46%			5.25%		2.55%		2.11%		1.75%		1.15%
Frederick High	1568	1181	1213	1331	85%	1363	87%	1395	89%	1414	90%	1429	91%	1441	92%
Growth rate			2.71%	9.73%			2.40%		2.35%		1.36%		1.06%		0.84%
Longmont High	1540	1261	1265	1275	83%	1268	82%	1265	82%	1263	82%	1269	82%	1274	83%
Growth rate			0.32%	0.79%			-0.55%		-0.24%		-0.16%		0.48%		0.39%
Longs Peak Middle	660	458	426	391	59%	390	59%	398	60%	404	61%	410	62%	414	63%
Growth rate			-6.99%	-8.22%			-0.26%		2.05%		1.51%		1.49%		0.98%
Lyons M/SH (6-12)	638	397	398	366	57%	371	58%	375	59%	383	60%	393	62%	400	63%
Growth rate			0.25%	-8.04%			1.37%		1.08%		2.13%		2.61%		1.78%
Mead Middle	510	478	489	533	105%	554	109%	570	112%	585	115%	600	118%	621	122%
Growth rate			2.30%	9.00%			3.94%		2.89%		2.63%		2.56%		3.50%
Mead High	1540	1147	1086	1083	70%	1114	72%	1128	73%	1152	75%	1180	77%	1209	79%
Growth rate			-5.32%	-0.28%			2.86%		1.26%		2.13%		2.43%		2.46%
Niwot High	1568	1177	1200	1287	82%	1326	85%	1320	84%	1315	84%	1323	84%	1320	84%
Growth rate			1.95%	7.25%			3.03%		-0.45%		-0.38%		0.61%		-0.23%
Silver Creek High	1568	1349	1301	1274	81%	1255	80%	1249	80%	1257	80%	1268	81%	1281	82%
Growth rate			-3.56%	-2.08%			-1.49%		-0.48%		0.64%		0.88%		1.03%
Skyline High	1680	1482	1520	1487	89%	1423	85%	1430	85%	1446	86%	1455	87%	1472	88%
Growth rate			2.56%	-2.17%			-4.30%		0.49%		1.12%		0.62%		1.17%
Soaring Heights	375	431	481	495	132%	511	136%	528	141%	545	145%	568	151%	579	154%
Growth rate			11.60%	2.91%			3.23%		3.33%		3.22%		4.22%		1.94%
Sunset Middle	630	453	430	395	63%	380	60%	388	62%	394	63%	400	63%	408	65%
Growth rate			-5.08%	-8.14%			-3.80%		2.11%		1.55%		1.52%		2.00%
Thunder Valley 6-8	300	308	295	313	104%	307	102%	321	107%	332	111%	345	115%	353	118%
Growth rate			-4.22%	6.10%			-1.92%		4.56%		3.43%		3.92%		2.32%
Timberline 6-8 (Former Heritage)	450	369	319	331	74%	332	74%	335	74%	346	77%	358	80%	359	80%
Growth rate			-13.55%	3.76%			0.30%		0.90%		3.28%		3.47%		0.28%
Trail Ridge Middle	840	680	609	549	65%	532	63%	540	64%	558	66%	567	68%	574	68%
Growth rate			-10.44%	-9.85%	33952.00%		-3.10%		1.50%		3.33%		1.61%		1.23%
Westview Middle	720	713	706	648	90%	623	87%	627	87%	636	88%	648	90%	652	91%
Growth rate			-0.98%	-8.22%			-3.86%		0.64%		1.44%		1.89%		0.62%
SUB TOTAL	18533	15830	15747	15867	86%	15952	86%	16156	87%	16399	88%	16647	90%	16863	91%
CHANGE			-83	120		85		204		243		248		216	
Growth rate			-0.52%	0.76%		0.54%		1.28%		1.50%		1.51%		1.30%	

Enrollment Projections 2022-2026

Mid-Level for Board of Education

CHARTER SCHOOLS	Est. Capacity	2019	2020	2021	2021 Capacity	2022	2022 Capacity	2023	2023 Capacity	2024	2024 Capacity	2025	2025 Capacity	2026	2026 Capacity
Aspen Ridge Charter		439	482	503		557		560		570		580		590	
	Growth rate		9.79%	4.36%			10.74%		0.54%		1.79%		1.75%		1.72%
Carbon Valley		198	193	211		230		225		230		235		240	
	Growth rate		-2.53%	9.33%			9.00%		-2.17%		2.22%		2.17%		2.13%
Firestone Charter		579	611	617		646		656		660		670		680	
	Growth rate		5.53%	0.98%			4.70%		1.55%		0.61%		1.52%		1.49%
Flagstaff Charter		874	786	748		738		740		740		750		750	
	Growth rate		-10.07%	-4.83%			-1.34%		0.27%		0.00%		1.35%		0.00%
St. Vrain Comm. Montessori		219	223	228		241		245		250		250		255	
	Growth rate		1.83%	2.24%			5.70%		1.66%		2.04%		0.00%		2.00%
Twin Peaks		729	808	830		844		850		860		860		870	
	Growth rate		10.84%	2.72%			1.69%		0.71%		1.18%		0.00%		1.16%
SUB TOTAL		3038	3103	3137		3256		3276		3310		3345		3385	
	CHANGE		65	34		119		20		34		35		40	
	Growth rate		2.14%	1.10%		3.79%		0.61%		1.04%		1.06%		1.20%	
Neigh. Elementary Projection		11381	10480	10710	230	10908	198	11132	224	11392	260	11665	273	11929	264
Neighborhood Middle Projection		6369	6155	6051	-104	6029	-22	6145	116	6281	136	6409	128	6523	114
Neigh. High School Projection		9461	9592	9816	224	9923	107	10011	88	10118	107	10238	120	10340	102
ALTERNATIVES		1487	1300	1802	502	1690		1705		1720		1740		1775	
Mid-Level	2018	2019	2020	2021	2021 Capacity	2022	2022 Capacity	2023	2023 Capacity	2024	2024 Capacity	2025	2025 Capacity	2026	2026 Capacity
GRAND TOTAL	31371	31736	30630	31516	Ave.	31806		32269		32821		33397		33952	
CHANGE	365	-1106	886	48		290		463		552		576		555	
Growth rate	1.16%	-3.49%	2.89%			0.92%		1.46%		1.71%		1.75%		1.66%	
District Growth W/O Charters	365	-1171	852	15		171		443		518		541		515	
Neighborhood Growth Only			-984	350		283		428		503		521		480	
Alternative Programs 2022:	Global Online:	90	PR-Sped:	330		Meridian	105	APEX	715	LaunchEd	450				
Possible FTE at 95.3				0.953		30311.1		30752.4		31278.4		31827.3		32356.3	
Possible FTE at 95.4				0.954		30342.9		30784.6		31311.2		31860.7		32390.2	
Possible FTE at 95.5				0.955		30374.7		30816.9		31344.1		31894.1		32424.2	

Projections for Charter schools developed by the individual charters

Enrollment Projections 2022-2026

Low-Level for Board of Education

ELEMENTARY SCHOOLS	Est. Capacity	2019	2020	2021	2021 Capacity	2022	2022 Capacity	2023	2023 Capacity	2024	2024 Capacity	2025	2025 Capacity	2026	2026 Capacity
Alpine	564	417	361	347	62%	342	61%	341	60%	344	61%	348	62%	348	62%
Growth rate			-13.43%	-3.88%			-1.46%		-0.34%		1.05%		1.06%		-0.01%
Black Rock	637	539	518	553	87%	580	91%	582	91%	582	91%	583	92%	589	92%
Growth rate			-3.90%	6.76%			4.79%		0.39%		0.00%		0.20%		0.98%
Blue Mountain	662	585	522	513	77%	513	77%	523	79%	530	80%	542	82%	550	83%
Growth rate			-10.77%	-1.72%			-0.02%		2.06%		1.20%		2.30%		1.48%
Burlington	490	369	311	289	59%	290	59%	296	60%	306	62%	313	64%	320	65%
Growth rate			-15.72%	-7.07%			0.43%		2.09%		3.29%		2.22%		2.25%
Centennial	515	529	489	485	94%	489	95%	499	97%	510	99%	527	102%	542	105%
Growth rate			-7.56%	-0.82%			0.83%		1.99%		2.27%		3.37%		2.82%
Central	466	346	282	309	66%	305	65%	300	64%	290	62%	296	64%	306	66%
Growth rate			-18.50%	9.57%			-1.24%		-1.60%		-3.29%		2.04%		3.40%
Columbine	515	259	240	227	44%	220	43%	222	43%	231	45%	234	45%	234	45%
Growth rate			-7.34%	-5.42%			-3.23%		1.16%		3.74%		1.47%		-0.01%
Eagle Crest	662	544	457	403	61%	406	61%	405	61%	414	63%	429	65%	442	67%
Growth rate			-17.82%	-15.99%			0.63%		-0.15%		2.23%		3.60%		2.99%
Erie	539	302	299	307	57%	321	60%	324	60%	334	62%	352	65%	371	69%
Growth rate			-0.99%	2.68%			4.58%		0.90%		2.96%		5.49%		5.48%
Fall River	564	483	462	452	80%	443	79%	444	79%	450	80%	453	80%	451	80%
Growth rate			-4.35%	-2.16%			-1.92%		0.26%		1.31%		0.66%		-0.41%
Grand View	612	325	340	386	63%	414	68%	420	69%	430	70%	438	72%	455	74%
Growth rate			4.62%	13.53%			7.38%		1.27%		2.36%		1.85%		4.02%
Highlands	625			219		275	44%	338	54%	350	56%	365	58%	379	61%
							25.73%		22.68%		3.68%		4.09%		3.93%
Hygiene	417	308	289	293	70%	295	71%	306	73%	306	73%	311	75%	311	75%
Growth rate			-6.17%	1.38%			0.76%		3.72%		-0.04%		1.59%		0.09%
Indian Peaks	466	282	263	230	49%	220	47%	215	46%	224	48%	230	49%	231	50%
Growth rate			-6.74%	-12.55%			-4.49%		-1.98%		3.88%		2.84%		0.42%
Legacy	588	528	456	446	76%	442	75%	450	77%	459	78%	476	81%	488	83%
Growth rate			-13.64%	-2.19%			-0.82%		1.82%		1.94%		3.60%		2.61%
Longmont Estates	466	317	284	280	60%	287	62%	289	62%	293	63%	300	64%	302	65%
Growth rate			-10.41%	-1.41%			2.60%		0.74%		1.36%		2.35%		0.45%
Lyons	319	288	244	264	83%	258	81%	254	80%	255	80%	260	82%	261	82%
Growth rate			-15.28%	8.20%			-2.11%		-1.78%		0.48%		2.03%		0.27%
Mead	637	603	537	665	104%	703	110%	719	113%	726	114%	739	116%	746	117%
Growth rate			-10.95%	23.84%			5.68%		2.32%		0.96%		1.77%		0.99%
Mt View	368	255	236	234	64%	228	62%	227	62%	240	65%	239	65%	238	65%
Growth rate			-7.45%	-0.85%			-2.72%		-0.20%		5.80%		-0.64%		-0.44%
Niwot	539	419	378	369	68%	349	65%	346	64%	354	66%	351	65%	353	65%
Growth rate			-9.79%	-2.38%			-5.45%		-0.92%		2.44%		-0.92%		0.54%
Northridge	490	289	251	274	56%	276	56%	263	54%	267	54%	271	55%	273	56%
Growth rate			-13.15%	9.16%			0.85%		-4.92%		1.56%		1.55%		0.59%
Prairie Ridge	441	454	436	430	98%	425	96%	433	98%	451	102%	462	105%	471	107%
Growth rate			-3.96%	-1.38%			-1.06%		1.69%		4.31%		2.38%		1.88%
Red Hawk	637	544	547	561	88%	571	90%	572	90%	572	90%	577	91%	581	91%
Growth rate			0.55%	2.56%			1.70%		0.23%		0.01%		0.89%		0.67%
Rocky Mt	441	344	325	309	70%	313	71%	316	72%	322	73%	323	73%	322	73%
Growth rate			-5.52%	-4.92%			1.33%		0.94%		1.80%		0.27%		-0.24%
Sanborn	466	333	291	240	52%	239	51%	237	51%	243	52%	244	52%	247	53%
Growth rate			-12.61%	-17.53%			-0.60%		-0.63%		2.63%		0.16%		1.54%
Soaring Heights PK-5	750	695	706	652	87%	680	91%	699	93%	705	94%	715	95%	721	96%
Growth rate			1.58%	-7.65%											
Thunder Valley K-5 (Former Freder Elem)	625	543	487	512	82%	524	84%	531	85%	539	86%	541	87%	547	88%
			-10.31%	5.13%			2.31%		1.44%		1.35%		0.44%		1.12%
Timberline K-5 (Former Spangler- Loma Linda)	750	481	469	461	61%	434	58%	442	59%	448	60%	452	60%	451	60%
			-2.49%	-1.71%			-5.77%		1.87%		1.32%		0.88%		-0.20%
SUB TOTAL	13264	11381	10480	10710	81%	10843	82%	10995	83%	11176	84%	11370	86%	11529	87%
CHANGE			-901	230		133		153		180		194		160	
Growth rate			-7.92%	2.19%		1.24%		1.41%		1.64%		1.74%		1.40%	

Enrollment Projections 2022-2026

Low-Level for Board of Education

SECONDARY SCHOOLS	Est. Capacity	2019	2020	2021	2021 Capacity	2022	2022 Capacity	2023	2023 Capacity	2024	2024 Capacity	2025	2025 Capacity	2026	2026 Capacity
Altona Middle	840	830	794	795	95%	798	95%	800	95%	802	96%	803	96%	804	96%
Growth rate			-4.34%	0.13%			0.40%		0.23%		0.30%		0.09%		0.12%
Coal Ridge Middle	840	823	816	819	98%	827	98%	830	99%	835	99%	836	100%	841	100%
Growth rate			-0.85%	0.37%			0.98%		0.32%		0.62%		0.18%		0.55%
Erie Middle	810	826	790	782	97%	760	94%	778	96%	797	98%	810	100%	832	103%
Growth rate			-4.36%	-1.01%			-2.76%		2.35%		2.35%		1.68%		2.74%
Erie High	1456	1467	1609	1713	118%	1792	123%	1826	125%	1852	127%	1872	129%	1878	129%
Growth rate			9.68%	6.46%			4.62%		1.90%		1.42%		1.09%		0.29%
Frederick High	1316	1181	1213	1331	101%	1355	103%	1378	105%	1387	105%	1393	106%	1393	106%
Growth rate			2.71%	9.73%			1.79%		1.70%		0.67%		0.41%		-0.01%
Longmont High	1540	1261	1265	1275	83%	1260	82%	1249	81%	1239	80%	1237	80%	1231	80%
Growth rate			0.32%	0.79%			-1.15%		-0.87%		-0.84%		-0.17%		-0.45%
Longs Peak Middle	660	458	426	391	59%	388	59%	393	60%	396	60%	400	61%	400	61%
Growth rate			-6.99%	-8.22%			-0.85%		1.40%		0.82%		0.83%		0.13%
Lyons M/SH (6-12)	638	397	398	366	57%	369	58%	370	58%	376	59%	383	60%	387	61%
Growth rate			0.25%	-8.04%			0.76%		0.44%		1.44%		1.95%		0.92%
Mead Middle	510	478	489	533	105%	551	108%	563	110%	574	113%	585	115%	600	118%
Growth rate			2.30%	9.00%			3.32%		2.24%		1.94%		1.91%		2.63%
Mead High	1540	1147	1086	1083	70%	1107	72%	1114	72%	1130	73%	1150	75%	1168	76%
Growth rate			-5.32%	-0.28%			2.25%		0.61%		1.43%		1.77%		1.60%
Niwot High	1568	1177	1200	1287	82%	1318	84%	1304	83%	1290	82%	1290	82%	1276	81%
Growth rate			1.95%	7.25%			2.41%		-1.08%		-1.05%		-0.04%		-1.07%
Silver Creek High	1568	1349	1301	1274	81%	1247	80%	1234	79%	1233	79%	1236	79%	1238	79%
Growth rate			-3.56%	-2.08%			-2.08%		-1.11%		-0.04%		0.23%		0.18%
Skyline High	1680	1482	1520	1487	89%	1414	84%	1412	84%	1419	84%	1418	84%	1423	85%
Growth rate			2.56%	-2.17%			-4.88%		-0.15%		0.43%		-0.02%		0.32%
Soaring Heights PK8 (Middle)	375	431	481	495	132%	508	135%	522	139%	535	143%	554	148%	560	149%
			11.60%	2.91%											
Sunset Middle	630	453	430	395	63%	378	60%	383	61%	387	61%	390	62%	394	63%
Growth rate			-5.08%	-8.14%			-4.37%		1.46%		0.86%		0.87%		1.14%
Thunder Valley 6-8 (Former Fred. El. Portion of Coal Rdg)	300	308	295	313	104%	305	102%	317	106%	326	109%	336	112%	341	114%
			-4.22%	6.10%			-2.51%		3.90%		2.73%		3.25%		1.46%
Timberline 6-8 (Former Heritage)	450	369	319	331	74%	330	73%	331	74%	339	75%	349	78%	347	77%
			-13.55%	3.76%			-0.30%		0.26%		2.58%		2.80%		-0.56%
Trail Ridge Middle	840	680	609	549	65%	529	63%	533	63%	547	65%	553	66%	555	66%
Growth rate			-10.44%	-9.85%			-3.68%		0.86%		2.63%		0.96%		0.38%
Westview Middle	720	713	706	648	90%	619	86%	619	86%	624	87%	632	88%	630	88%
Growth rate			-0.98%	-8.22%			-4.43%		0.00%		0.75%		1.23%		-0.23%
SUB TOTAL	17906	15830	15747	15867	89%	15856	89%	15957	89%	16087	90%	16226	91%	16298	91%
CHANGE			-83	120		-11		101		130		138		72	
Growth rate			-0.52%	0.76%		-0.07%		0.64%		0.82%		0.86%		0.45%	

Enrollment Projections 2022-2026

Low-Level for Board of Education

CHARTER SCHOOLS	Est. Capacity	2019	2020	2020	2021 Capacity	2022	2022 Capacity	2023	2023 Capacity	2024	2024 Capacity	2025	2025 Capacity	2026	2026 Capacity
Aspen Ridge Charter		439	482	503		554		553		559		565		570	
Growth rate			9.79%	4.36%			10.07%		-0.10%		1.10%		1.10%		0.87%
Carbon Valley		198	193	211		229		222		226		229		232	
Growth rate			-2.53%	9.33%			8.35%		-2.79%		1.53%		1.52%		1.27%
Firestone Charter		579	611	617		642		648		647		653		657	
Growth rate			5.53%	0.98%			4.07%		0.90%		-0.07%		0.86%		0.64%
Flagstaff Charter		874	786	748		734		731		726		731		725	
Growth rate			-10.07%	-4.83%			-1.93%		-0.36%		-0.68%		0.70%		-0.84%
St. Vrain Comm. Montessori		219	223	228		240		242		245		244		246	
Growth rate			1.83%	2.24%			5.07%		1.02%		1.35%		-0.64%		1.14%
Twin Peaks		729	808	830		839		840		844		838		841	
Growth rate			10.84%	2.72%			1.08%		0.07%		0.49%		-0.64%		0.31%
SUB TOTAL		3038	3103	3137		3236		3236		3247		3260		3272	
CHANGE			65	34		99		-1		11		13		11	
Growth rate			2.14%	1.10%		3.17%		-0.02%		0.35%		0.41%		0.34%	
Neigh. Elementary Projection		11381	10480	10710	230	10843	133	10995	153	11176	180	11370	194	11529	160
Neighborhood Middle Projection		6369	6155	6051	-104	5993	-58	6069	77	6162	92	6247	85	6304	58
Neigh. High School Projection		9461	9592	9816	224	9863	47	9888	24	9926	38	9979	53	9994	15
ALTERNATIVES		1487	1300	1802	502	1680		1684		1687		1696		1716	
Low-Level	2018	2018	2019	2020	2021 Capacity	2022	2022 Capacity	2023	2023 Capacity	2024	2024 Capacity	2025	2025 Capacity	2026	2026 Capacity
GRAND TOTAL	31371	31736	30630	31516	Ave.	31615		31872		32197		32552		32815	
CHANGE	365	-1106	886	48		99		257		325		355		263	
Growth rate	1.16%	-3.49%	2.89%			0.31%		0.81%		1.02%		1.10%		0.81%	
Alternative Programs 2019:	Global Online:	89	PR-Sped:	328		Meridian	104	APEX	711	LaunchEd	447				
Possible FTE at 95.3				0.953		30129.3		30374.1		30684.1		31022.1		31272.3	
Possible FTE at 95.4				0.954		30160.9		30406.0		30716.3		31054.7		31305.1	
Possible FTE at 95.5				0.955		30192.5		30437.8		30748.5		31087.2		31338.0	

Note: some rounding on Low and High level projections

Projections for Charter schools developed by the individual charters

Enrollment Projections 2022-2026

High-Level Draft for Board of Education

ELEMENTARY SCHOOLS	Est. Capacity	2019	2020	2021	2021 Capacity	2022	2022 Capacity	2023	2023 Capacity	2024	2024 Capacity	2025	2025 Capacity	2026	2026 Capacity
Alpine	564	417	361	347	62%	346	61%	349	62%	358	63%	367	65%	373	66%
Growth rate			-13.43%	-3.88%			-0.25%		0.97%		2.44%		2.44%		1.60%
Black Rock	637	539	518	553	87%	587	92%	597	94%	605	95%	614	96%	630	99%
Growth rate			-3.90%	6.76%			6.08%		1.71%		1.37%		1.56%		2.60%
Blue Mountain	662	585	522	513	77%	519	78%	537	81%	551	83%	571	86%	589	89%
Growth rate			-10.77%	-1.72%			1.21%		3.41%		2.59%		3.70%		3.11%
Burlington	490	369	311	289	59%	294	60%	304	62%	318	65%	330	67%	343	70%
Growth rate			-15.72%	-7.07%			1.66%		3.43%		4.72%		3.62%		3.89%
Centennial	515	529	489	485	94%	495	96%	512	99%	530	103%	556	108%	581	113%
Growth rate			-7.56%	-0.82%			2.07%		3.34%		3.68%		4.78%		4.47%
Central	466	346	282	309	66%	309	66%	308	66%	302	65%	312	67%	328	70%
Growth rate			-18.50%	9.57%			-0.03%		-0.31%		-1.96%		3.44%		5.06%
Columbine	515	259	240	227	44%	222	43%	228	44%	240	47%	247	48%	250	49%
Growth rate			-7.34%	-5.42%			-2.04%		2.50%		5.17%		2.86%		1.59%
Eagle Crest	662	544	457	403	61%	411	62%	415	63%	430	65%	452	68%	473	71%
Growth rate			-15.99%	-11.82%			1.87%		1.17%		3.64%		5.01%		4.64%
Erie	539	302	299	307	57%	325	60%	332	62%	347	64%	371	69%	397	74%
Growth rate			-0.99%	2.68%			5.86%		2.23%		4.37%		6.94%		7.17%
Fall River	564	483	462	452	80%	449	80%	456	81%	468	83%	478	85%	483	86%
Growth rate			-4.35%	-2.16%			-0.72%		1.58%		2.70%		2.03%		1.18%
Grand View	612	325	340	386	63%	420	69%	431	70%	447	73%	461	75%	487	80%
Growth rate			4.62%	13.53%			8.70%		2.61%		3.77%		3.25%		5.69%
Highlands	625			219		279	45%	346	55%	364	58%	384	61%	406	65%
Hygiene	417	308	289	293	70%	299	72%	314	75%	318	76%	328	79%	333	80%
Growth rate			-6.17%	1.38%			1.99%		5.08%		1.34%		2.98%		1.70%
Indian Peaks	466	282	263	230	49%	222	48%	221	47%	233	50%	242	52%	247	53%
Growth rate			-6.74%	-12.55%			-3.32%		-0.69%		5.31%		4.25%		2.03%
Legacy	588	528	456	446	76%	448	76%	462	79%	477	81%	501	85%	523	89%
Growth rate			-13.64%	-2.19%			0.39%		3.16%		3.34%		5.02%		4.26%
Longmont Estates	466	317	284	280	60%	291	62%	297	64%	305	65%	316	68%	323	69%
Growth rate			-10.41%	-1.41%			3.85%		2.07%		2.75%		3.75%		2.06%
Lyons	319	288	244	264	83%	262	82%	260	82%	265	83%	274	86%	279	88%
Growth rate			-15.28%	8.20%			-0.90%		-0.49%		1.87%		3.43%		1.88%
Mead	637	603	537	665	104%	711	112%	737	116%	755	118%	779	122%	799	125%
Growth rate			-10.95%	23.84%			6.97%		3.67%		2.35%		3.17%		2.61%
Mt View	368	255	236	234	64%	230	63%	233	63%	250	68%	252	68%	255	69%
Growth rate			-7.45%	-0.85%			-1.53%		1.12%		7.26%		0.72%		1.16%
Niwot	539	419	378	369	68%	353	66%	355	66%	368	68%	370	69%	378	70%
Growth rate			-9.79%	-2.38%			-4.29%		0.39%		3.86%		0.44%		2.15%
Northridge	490	289	251	274	56%	280	57%	269	55%	277	57%	286	58%	292	60%
Growth rate			-13.15%	9.16%			2.09%		-3.67%		2.96%		2.94%		2.20%
Prairie Ridge	441	454	436	430	98%	431	98%	444	101%	469	106%	487	110%	504	114%
Growth rate			-3.96%	-1.38%			0.15%		3.03%		5.75%		3.78%		3.51%
Red Hawk	637	544	547	561	88%	578	91%	587	92%	595	93%	608	95%	622	98%
Growth rate			0.55%	2.56%			2.95%		1.55%		1.39%		2.27%		2.28%
Rocky Mt	441	344	325	309	70%	317	72%	324	74%	335	76%	340	77%	345	78%
Growth rate			-5.52%	-4.92%			2.57%		2.27%		3.21%		1.64%		1.36%
Sanborn	466	333	291	240	52%	241	52%	243	52%	253	54%	257	55%	265	57%
Growth rate			-12.61%	-17.53%			0.62%		0.68%		4.05%		1.53%		3.17%
Soaring Heights	750	695	706	652	87%	688	92%	717	96%	733	98%	754	101%	772	103%
Growth rate			1.58%	-7.65%			5.56%		4.21%		2.26%		2.82%		2.40%
Thunder Valley K-5	625	543	487	512	82%	530	85%	545	87%	560	90%	570	91%	586	94%
Growth rate			-10.31%	5.13%			3.57%		2.78%		2.75%		1.82%		2.75%
Timberline K-5	750	481	469	461	61%	440	59%	454	61%	466	62%	477	64%	483	64%
Growth rate			-2.49%	-1.71%			-4.62%		3.21%		2.71%		2.26%		1.40%
SUB TOTAL	13264	11381	10480	10710	81%	10976	83%	11277	85%	11620	88%	11983	90%	12347	93%
CHANGE			-901	230		266		301		343		364		363	
Growth rate			-7.92%	2.19%		2.48%		2.74%		3.04%		3.13%		3.03%	

Enrollment Projections 2022-2026

High-Level Draft for Board of Education

SECONDARY SCHOOLS	Est. Capacity	2019	2020	2021	2021 Capacity	2022	2022 Capacity	2023	2023 Capacity	2024	2024 Capacity	2025	2025 Capacity	2026	2026 Capacity
Altona Middle	840	830	794	795	95%	808	96%	821	98%	834	99%	846	101%	861	103%
Growth rate			-4.34%	0.13%			1.63%		1.55%		1.69%		1.45%		1.73%
Coal Ridge Middle	840	823	816	819	98%	837	100%	851	101%	868	103%	881	105%	900	107%
Growth rate			-0.85%	0.37%			2.22%		1.64%		2.01%		1.54%		2.16%
Erie Middle	810	826	790	782	97%	770	95%	798	99%	828	102%	854	105%	891	110%
Growth rate			-4.36%	-1.01%			-1.57%		3.70%		3.76%		3.07%		4.39%
Erie High	1456	1467	1609	1713	118%	1814	125%	1873	129%	1926	132%	1973	136%	2011	138%
Growth rate			9.68%	6.46%			5.91%		3.24%		2.81%		2.48%		1.90%
Frederick High	1316	1181	1213	1331	101%	1371	104%	1413	107%	1442	110%	1468	112%	1491	113%
Growth rate			2.71%	9.73%			3.04%		3.04%		2.06%		1.78%		1.60%
Longmont High	1540	1261	1265	1275	83%	1276	83%	1281	83%	1288	84%	1304	85%	1319	86%
Growth rate			0.32%	0.79%			0.07%		0.44%		0.53%		1.19%		1.15%
Longs Peak Middle	660	458	426	391	59%	392	59%	403	61%	412	62%	421	64%	428	65%
Growth rate			-6.99%	-8.22%			0.36%		2.74%		2.21%		2.21%		1.73%
Lyons M/SH (6-12)	638	397	398	366	57%	373	59%	380	60%	391	61%	404	63%	414	65%
Growth rate			0.25%	-8.04%			1.99%		1.76%		2.84%		3.35%		2.54%
Mead Middle	510	478	489	533	105%	557	109%	577	113%	597	117%	616	121%	643	126%
Growth rate			2.30%	9.00%			4.58%		3.58%		3.34%		3.30%		4.28%
Mead High	1540	1147	1086	1083	70%	1121	73%	1143	74%	1175	76%	1212	79%	1251	81%
Growth rate			-5.32%	-0.28%			3.50%		1.94%		2.83%		3.16%		3.23%
Niwot High	1568	1177	1200	1287	82%	1334	85%	1337	85%	1341	86%	1359	87%	1366	87%
Growth rate			1.95%	7.25%			3.67%		0.22%		0.31%		1.33%		0.52%
Silver Creek High	1568	1349	1301	1274	81%	1263	81%	1265	81%	1282	82%	1303	83%	1326	85%
Growth rate			-3.56%	-2.08%			-0.88%		0.19%		1.34%		1.60%		1.78%
Skyline High	1680	1482	1520	1487	89%	1432	85%	1449	86%	1475	88%	1495	89%	1524	91%
Growth rate			2.56%	-2.17%			-3.71%		1.17%		1.82%		1.34%		1.93%
Soaring Heights 6-8	375	431	481	495	132%	514	137%	535	143%	556	148%	584	156%	599	160%
			11.60%	2.91%											
Sunset Middle	630	453	430	395	63%	382	61%	393	62%	402	64%	411	65%	422	67%
Growth rate			-5.08%	-8.14%			-3.20%		2.80%		2.25%		2.25%		2.76%
Thunder Valley 6-8 (Former Fred. El. Portion of Coal Rdg)	300	308	295	313	104%	309	103%	325	108%	339	113%	354	118%	365	122%
			-4.22%	6.10%			-1.31%		5.27%		4.14%		4.66%		3.09%
Timberline 6-8 (Former Heritage)	450	369	319	331	74%	334	74%	339	75%	353	78%	368	82%	372	83%
			-13.55%	3.76%			0.92%		1.59%		4.00%		4.21%		1.03%
Trail Ridge Middle	840	680	609	549	65%	535	64%	547	65%	569	68%	582	69%	594	71%
Growth rate			-10.44%	-9.85%			-2.50%		2.19%		4.05%		2.34%		1.99%
Westview Middle	720	713	706	648	90%	627	87%	635	88%	649	90%	666	92%	675	94%
Growth rate			-0.98%	-8.22%			-3.26%		1.32%		2.14%		2.62%		1.37%
SUB TOTAL	17906	15830	15747	15867	89%	16051	90%	16366	91%	16727	93%	17101	96%	17453	97%
CHANGE			-83	120		184		315		361		374		352	
Growth rate			-0.52%	0.76%		1.16%		1.96%		2.21%		2.24%		2.06%	

Enrollment Projections 2022-2026

High-Level Draft for Board of Education

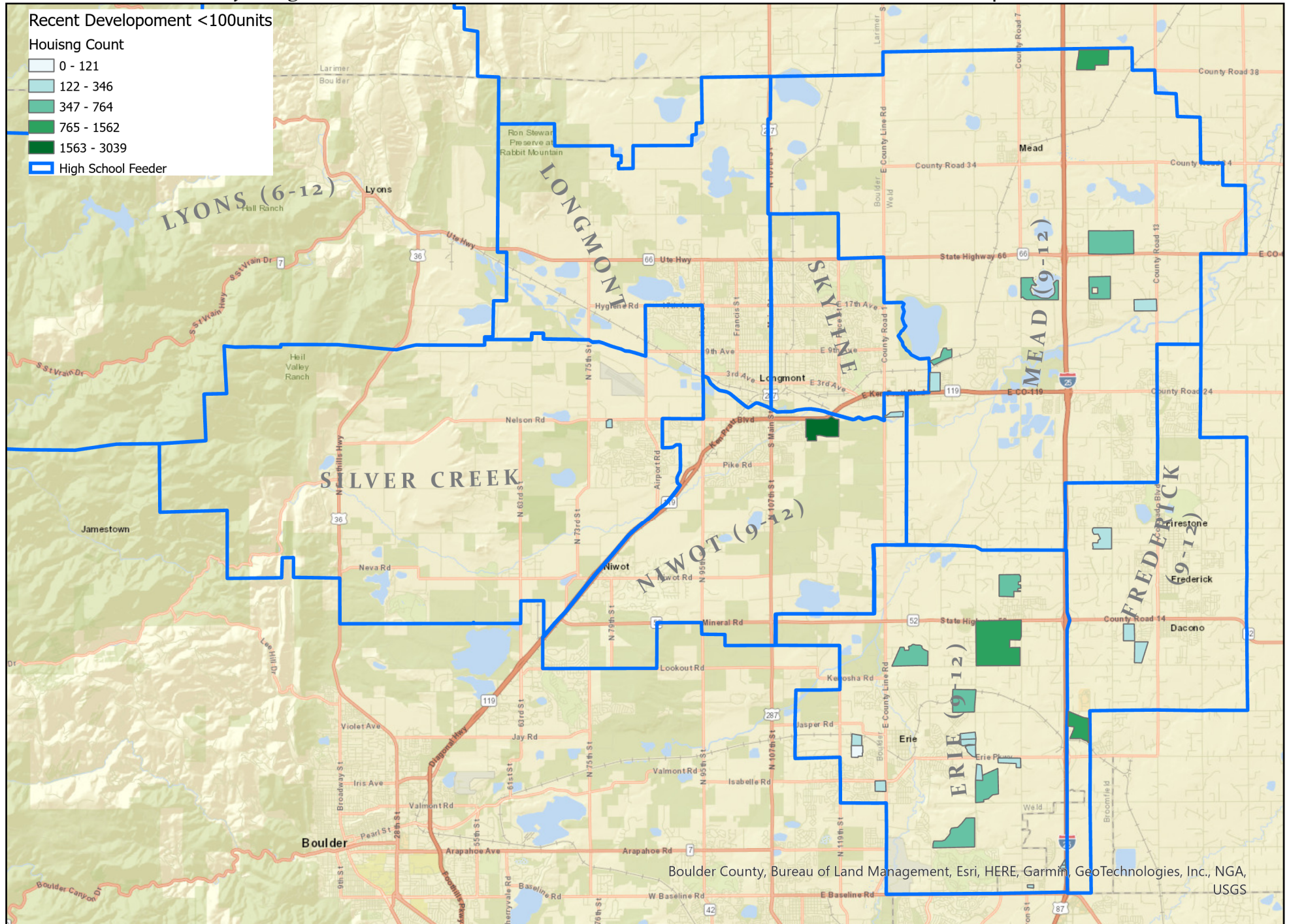
CHARTER SCHOOLS	Est. Capacity	2019	2020	2020	2021 Capacity	2022	2022 Capacity	2023	2023 Capacity	2024	2024 Capacity	2025	2025 Capacity	2026	2026 Capacity
Aspen Ridge Charter		439	482	503		560		567		581		596		611	
Growth rate			9.79%	4.36%			11.42%		1.22%		2.49%		2.48%		2.49%
Carbon Valley		198	193	211		231		228		235		241		248	
Growth rate			-2.53%	9.33%			9.68%		-1.51%		2.93%		2.91%		2.89%
Firestone Charter		579	611	617		650		665		673		688		704	
Growth rate			5.53%	0.98%			5.35%		2.23%		1.30%		2.24%		2.25%
Flagstaff Charter		874	786	748		743		750		755		770		776	
Growth rate			-10.07%	-4.83%			-0.73%		0.95%		0.69%		2.08%		0.75%
St. Vrain Comm. Montessori		219	223	228		242		248		255		257		264	
Growth rate			1.83%	2.24%			6.36%		2.35%		2.75%		0.72%		2.76%
Twin Peaks		729	808	830		849		861		877		883		900	
Growth rate			10.84%	2.72%			2.32%		1.39%		1.88%		0.72%		1.92%
SUB TOTAL		3038	3103	3137		3276		3319		3376		3436		3503	
CHANGE			65	34		139		42		58		60		67	
Growth rate			2.14%	1.10%		4.44%		1.29%		1.74%		1.78%		1.95%	
Neigh. Elementary Projection		11381	10480	10710	230	10976	266	11277	301	11620	343	11983	364	12347	363
Neighborhood Middle Projection		6369	6155	6051	-104	6066	15	6225	159	6407	182	6584	177	6751	167
Neigh. High School Projection		9461	9592	9816	224	9985	169	10141	157	10320	179	10517	197	10702	184
ALTERNATIVES		1487	1300	1802	502	1700		1727		1754		1788		1837	
High-Level	2018	2019	2020	2021	2021 Capacity	2022	2022 Capacity	2023	2023 Capacity	2024	2024 Capacity	2025	2025 Capacity	2026	2026 Capacity
GRAND TOTAL	31371	31736	30630	31516	Ave.	32003		32688		33477		34309		35140	
CHANGE	365	-1106	886	48		487		685		789		831		832	
Growth rate	1.16%	-3.49%	2.89%			1.55%		2.14%		2.41%		2.48%		2.42%	
Alternative Programs 2019:	Global Online:	91	PR-Sped:	332		Meridian	106	APEX	719	LaunchEd	453				
Possible FTE at 95.3				0.953		30499.0		31152.1		31904.0		32696.2		33488.7	
Possible FTE at 95.4				0.954		30531.1		31184.8		31937.5		32730.5		33523.9	
Possible FTE at 95.5				0.955		30563.1		31217.5		31970.9		32764.8		33559.0	

Note: some rounding on Low and High level projects

Projections for Charter schools developed by the individual charters

Development Referral Master 2021

DATE REC'D	CITY	SUBDIVISION	Number of Units	TYPE OF UNITS	Application Type	K-5 Yield	6-8 Yield	9-12 Yield	Elem School	Middle School	High School
5/6/2021	Longmont	Irwin Thomas	2036	SF, Twn,multi	CP,LUA,RZ,PP	300	152	192	Indian Peaks	Sunset	Niwot
4/29/2021	Mead	Turion-South	1775	SFD, MULTI	CZ	356	158	170	Mead	Mead	Mead
10/14/2021	Dacono	Sweetgrass No 6	935	SFD	PP, Amd PUD	206	94	103	Thunder Valley	Thunder Valley	Frederick
8/3/2021	Erie	Summerfield	818	SF,Du,Twn	PP	148	69	73	Soaring Heights	Soaring Heights	Erie
11/2/2021	Mead	Meadow Ridge	681	SFD	PP,SP	150	68	75	Mead	Mead	Mead
12/8/2021	Erie	Spring Hill	632	SF,Du,twn	pp	126	58	62	Erie	Erie	Erie
5/14/2021	Erie	Redtail Ranch	564	SF,DU,TWN	PP	109	50	55	Highlands	Soaring Heights	Erie
2/17/2021	Frederick	Wyndham Hill F10	495	SFD	FP,FDP	109	50	54	Grand View	Erie	Erie
12/18/2021	Erie	Colliers Hill F6	479	SF, du	PP	103	46	50	Soaring Heights	Soaring Heights	Erie
12/31/2021	Firestone	Union North	475	sf	Rezone	105	48	52	Mead	Mead	Mead
4/9/2021	Erie	Westerly	397	SFD,Du	PP	86	39	42	Highlands	Soaring Heights	Erie
12/13/2021	Mead	Grand Meadow	368	SF	PP,PUD,SP,zo	81	37	40	Mead	Mead	Mead
12/7/2021	Mead	Waterfront F1	365	SF	FP	80	37	40	Mead	Mead	Mead
6/30/2020	Longmont	Notch66 Apts	336	Apt	SP,FP	49	19	21	Timberline	Timberline	Skyline
7/29/2021	Mead	Waterfront	334	SF	PP	74	33	37	Mead	Mead	Mead
2/17/2021	Erie	Colliers Hill F4-1	333	multi	RP,FP	50	20	20	Soaring Heights	Soaring Heights	Erie
6/22/2021	Frederick	Clearview Villages	302	SFD	PP,FP,RP	67	30	33	Legacy	Coal Ridge	Frederick
3/1/2021	Longmont	Sandstone Ranch	276	multi	sub. Pl, SP	40	15	17	Indian Peaks	Sunset	Niwot
7/8/2021	Erie	Westerly	258	sf, du	PP	51	23	24	Highlands	Soaring Heights	Erie
12/16/2021	Longmont	West Grange F4	254	SF	PP	37	16	18	Blue Mountain	Altona	Silver Creek
11/29/2021	Erie	Canyon Creek F10	252	SF,Du	FP	52	23	24	Red Hawk	Erie	Erie
11/29/2021	Erie	Four Corners	247	SFD, Twn	SP, FP	50	23	23	Red Hawk	Erie	Erie
7/2/2021	Broomfield	Palisade Park North F4 Rplt D	240	twn	fp	31	27	12	Highlands	Soaring Heights	Erie
1/21/2021	Broomfield	Highlands F1	228	multi	CP	34	18	5	Soaring Heights	Soaring Heights	Erie
5/13/2021	Erie	Westerly F2	222	sf,du,twn	FP	37	17	18	Highlands	Soaring Heights	Erie
11/29/2021	Firestone	Firelight Park	218	SF,Du,Twn	PP	38	18	19	Mead	Mead	Mead
9/15/2021	Dacono	Mesa Ridge	194	SFD	PP	43	19	21	Thunder Valley	Thunder Valley	Frederick
10/15/2021	Dacono	Ridge Lands	194	SFD	PDP,PP	43	19	21	Thunder Valley	Thunder Valley	Frederick
11/3/2021	Firestone	Barefoot Lakes F6	190	SFD	PP	42	19	21	Mead	Mead	Mead
3/18/2021	Broomfield	Palisade Park North F4	180	multi	CP	27	14	4	Highlands	Soaring Heights	Erie
10/19/2021	Erie	Colliers Hill 4H	159	Twn	PP,FP,SP	11	6	6	Soaring Heights	Soaring Heights	Erie
1/6/2021	Erie	Lafferty	126	SFD	PP	28	13	14	Red Hawk	Erie	Erie
10/15/2021	Erie	Canyon Creek F7	106	SFD	FP	23	11	12	Red Hawk	Erie	Erie
10/15/2021	Erie	Canyon Creek F8	88	du	FP	18	8	8	Red Hawk	Erie	Erie
4/29/2021	Erie	Erie Village 5 (Porchfront)	70	SFD,TWN	PD Amd	10	5	5	Erie	Erie	Erie
2/11/2021	Longmont	Sunset Heights Apts	55	multi	CSP, sub.plat	8	3	4	Indian Peaks	Sunset	Niwot
TOTAL 2015											
K-12 Total			14882			2822	1305	1395			
								5522	Yield	0.371052278	



EFFECTIVE	NAME	POSITION/LOCATION	LEAVE OF ABSENCE	SEPARATION RESIGNATION RETIREMENT	TERMINATION
	ADMINISTRATIVE/PROFESSIONAL/TECHNICAL				
2/16/22	Glaser, Julie	Manager - Cash & Investments / Finance		X	
	LICENSED				
1/7/22	Blanchard, Dyann	SPED Teacher / Trail Ridge MS	X		
2/28/22	Brown, Jill	Kindergarten Teacher / Sanborn ES	X		
2/28/22	Dowling, Courtney	Orchestra Teacher / Silver Creek HS	X		
1/24/22	Dudley, Nancy	2nd Grade Teacher / Eagle Crest ES	X		
2/14/22	Grossman, Brandon	Science Teacher / New Meridian HS	X		
1/10/22	Lewis, Kelsey	SPED Teacher / Silver Creek HS	X		
1/25/22	Mahleres, Lacey	Counselor / Timberline PK-8	X		
3/19/22	McCarthy, Elaine	Audiologist / Student Services		X	
1/26/22	McTaggart, Sandra	Psychologist / Student Services	X		
2/7/22	Miller, Rebecca	Counselor / Sanborn ES	X		
2/4/22	Sapir, Jesse	3rd Grade Teacher / Burlington ES	X		
2/3/22	Winget, Meghan	Speech/Language Pathologist / Student Services	X		
	CLASSIFIED				
2/24/22	Aguilar, Gerry Orlando	Bus Driver / Transportation		X	
2/22/22	Ahmad, Huda	SPED Para / Black Rock ES	X		
2/9/22	Campbell, Andrea	Nutrition Services Worker / Soaring Heights PK-8	X		
2/25/22	Decker, Mark	Bus Assistant -SpEd / Transportation		X	
1/27/22	Englerth, Michael	Custodian / Erie MS	X		
2/16/22	Gould, Haley	Health Clerk / Skyline HS		X	
2/22/22	Herman, Lori	Principal Secretary / Lyons M/S	X		
2/11/22	Hoekstra, Carrol	Bus Driver / Transportation		X	
2/23/22	Ingold, Brandon	Specialist - Auditorium / Facilities Use		X	
2/11/22	Klimecki, Amanda	Lab Technician / Black Rock ES		X	
2/28/22	Myers III, Charles	Bus Driver / Transportation		X	
2/24/22	Nieto, Aaron	Lab Technician / Mead ES		X	
2/22/22	Nieuwlandt, Stephanie	Lab Tech & Instructional Para / Fall River ES	X		
2/16/22	Oiph, Kate	Clerk - Department / English Language Proficiency Act / Title I		X	
2/11/22	Sickmon, Karesha	Specialized Program Para / Skyline HS		X	
1/28/22	Stelmack, Michelle	Preschool Para / Spark Discovery PS			X
1/5/22	Taylor, Stephanie	Nutrition Services Worker / Sunset MS	X		

March 9, 2022 Staff Appointments

7.2

HIRE DATE	NAME	POSITION	LOCATION
	ADMINISTRATIVE/PROFESSIONAL/TECHNICAL		
3/14/22	Wild, Cody	Specialist - Learning Systems	District Technology Services
	LICENSED		
2/7/22	Hodges, Amber	Elementary Music Teacher	Fall River ES
2/14/22	McKay, Kimberly	Occupational Therapist	Student Services
2/14/22	Miloradovich, Elizabeth	6th Grade Teacher	Mead MS
2/8/22	Olson, Nikol	Speech/Language Pathologist	Student Services
2/14/22	Sevy, Benjamin	Vocal Music Teacher	Hygiene ES
	CLASSIFIED		
2/7/22	Bart, Kristine	Attendance Clerk	Niwot HS
2/16/22	Bogan, Wesley	Nutrition Services Worker	Nutrition Services
2/10/22	Cardenas, Yolanda	Nutrition Services Worker	Highland ES
2/14/22	Craft, Jessica	Nutrition Services Worker	Indian Peaks ES
2/10/22	Dietzen, Katherine	PK Para/Instructional Para	Burlington ES
3/2/22	Gutsche, Courtney	Nutrition Services Worker	Coal Ridge MS
2/14/22	Hollis, Kimber	Nutrition Services Worker	Niwot HS
2/16/22	Kimbriel, Robert	Custodian	Mead HS
2/14/22	Kramer, Miriam	Nutrition Services Worker	Rocky Mountain ES
2/2/22	Lamutt, Sarah	Special Education Para	Fall River ES
2/22/22	Lane, Jeffrey	Instructional Para	Blue Mountain ES
3/3/22	Lekuch, Sarah	Secretary - Director	Student Services
2/24/22	Lucarelli, James	Bus Driver	Transportation
2/11/22	Maier, Vonda	Child Care Group Leader	Mead ES
2/21/22	Muir, Nancy	Bus Driver - Non-CDL	Transportation
2/8/22	O'Rourke, Connor	Wellness Technician	Human Resources
2/10/22	Paker, Andrea	Nutrition Services Worker	Mead HS
3/1/22	Patterson, Heather	Child Care Group Leader	Lyons ES
2/14/22	Portillo, Jonathan	Custodian	Mead HS
2/14/22	Wilkerson, Joseph	Mechanic IV - Fleet Maintenance	Transportation

MEMORANDUM

DATE: March 9, 2022
TO: Board of Education
FROM: Dr. Don Haddad, Superintendent of Schools
SUBJECT: Approval of Board of Education Meeting Minutes
Strategic Priority – High-Functioning School Board

RECOMMENDATION

That the Board of Education approve the minutes from the February Board Meetings.

BACKGROUND

The Board will be asked to approve the minutes from the February 9, 2022 Regular Meeting, the February 16, 2022 Study Session, the February 23, 2022 Study Session and the February 23, 2022 Regular Meeting.

MEMORANDUM

DATE: March 9, 2022

TO: Board of Education

FROM: Dr. Don Haddad, Superintendent of Schools

SUBJECT: Approval of Recommendation to Hire Assistant Superintendent of Innovation
Strategic Priority – Strong/Visionary Leadership

RECOMMENDATION

That the Board of Education approve the recommendation to hire Mr. Joseph McBreen as Assistant Superintendent of Innovation, effective July 1, 2022.

BACKGROUND

Mr. Joseph McBreen graduated with a Bachelor's Degree focusing on Political Science and Elementary Education from Colorado College. He received a Master's Degree focusing on Educational Leadership, Supervision & Curriculum Development from the University of Denver.

From 1991 to 2000, Mr. Joseph McBreen served as a Teacher and Tech Coordinator for Garfield RE-2 School District. From 2000 to 2003, he served as a Senior Sales Engineer for Carrier Access Corporation. From 2003 to 2007, he served as Senior IT Operations Manager for Boulder Valley School District. From 2007 to 2009, Mr. McBreen served as Director of Instructional Technology for Adams 12 School District. From 2009 to 2019, he served as the Chief Technology Officer for St. Vrain Valley Schools. Since 2019, Mr. McBreen has served as a consultant and executive coach for St. Vrain Valley Schools. His current role includes, providing coaching to district leaders, assisting with the Innovation Center's development of the Artificial Intelligence Leadership Team and supporting the cloud computing implementation of web services at the Innovation Center.

SALARY

Annual salary will be according to schedule.

MEMORANDUM

DATE: March 9, 2022

TO: Board of Education

FROM: Dr. Don Haddad, Superintendent of Schools

SUBJECT: Approval of Recommendation to Hire Principal at Grand View Elementary
Strategic Priority – Strong/Visionary Leadership

RECOMMENDATION

That the Board of Education approve the recommendation to hire Ms. Francesca Craver as Principal at Grand View Elementary, effective July 1, 2022.

BACKGROUND

Ms. Francesca Craver graduated with a Bachelor's Degree in Elementary Education and a Master's Degree in Special Education from the University of Northern Colorado. She received an Administrator License in Educational Leadership from the University of Denver and is currently pursuing a Doctorate of Education focusing on Social Justice, Equity & School Policy from the University of Denver.

Ms. Francesca Craver has been serving in Adams 12 Five Star School District since 1999. She has held roles that include Primary Teacher, Learning Specialist, Reading Interventionist and Assistant Principal. Since 2016, she has been serving as Principal at Malley Drive Elementary school.

SALARY

Annual salary will be according to schedule.

MEMORANDUM

DATE: March 9, 2022

TO: Board of Education

FROM: Dr. Don Haddad, Superintendent of Schools

SUBJECT: Approval of Recommendation to Hire Special Education Coordinator
Strategic Priority – Strong/Visionary Leadership

RECOMMENDATION

That the Board of Education approve the recommendation to hire Ms. Pauline Avis as Special Education Coordinator, effective April 4, 2022.

BACKGROUND

Ms. Pauline Avis graduated with a Bachelor's Degree and a Master's Degree in English Literature from the University of Colorado, Boulder. She also received a Master's Degree focusing on Special Education from Regis University and is currently pursuing a Doctorate of Education in Educational Leadership and Policy Studies from the University of Northern Colorado.

From 2010 to 2014, Ms. Pauline Avis was a teacher at Summit Charter Middle School. From 2014 to 2019, she served as a Special Education Teacher, MTSS Coordinator, 504 Coordinator and Intervention Specialist at Imagine Charter School. She currently serves as the Special Education Coordinator in Adams 14 School District.

SALARY

Annual salary will be according to schedule.

MEMORANDUM

DATE: March 9, 2022

TO: Board of Education

FROM: Dr. Don Haddad, Superintendent of Schools

SUBJECT: Approval of Recommendation to Hire Assistant Principal at LaunchED
Strategic Priority – Strong/Visionary Leadership

RECOMMENDATION

That the Board of Education approve the recommendation to hire Ms. Nannette McMurtry as Assistant Principal at LaunchED, effective July 1, 2022.

BACKGROUND

Ms. Nannette McMurtry graduated with a Bachelor's Degree in English from Howard Payne University. She received a Master's Degree in Education focusing on Teacher Leadership from Lamar University. She also received a Master's Degree in School Leadership and Administration from the University of Colorado, Denver.

From 2004 to 2012, Ms. Nannette McMurtry served as a Secondary, English Language Teacher at Coppell High School. From 2012 to 2017, she served as an Educational Technology Specialist at Boulder Valley School District. Currently, she serves as an Instructional Coordinator for St. Vrain Valley Schools.

SALARY

Annual salary will be according to schedule.

MEMORANDUM

DATE: March 9, 2022

TO: Board of Education

FROM: Dr. Don Haddad, Superintendent of Schools

SUBJECT: Second Reading and Approval of Revision to Board Policy FEG -
Construction Contracts Bidding and Awards
Strategic Priority – High Functioning School Board; Strong District
Finances

PURPOSE

Approve on Second Reading revisions to Board policy FEG Construction Contracts Bidding and Awards.

BACKGROUND

Revisions to this policy are being requested to streamline the construction contract process while still keeping board approval of contracts over \$100,000.

Construction Contracts Bidding and Awards

Competitive bidding procedures, approved by the superintendent or designee and consistent with the Board policy regarding competitive bidding, shall be used for all design-bid-build delivered construction projects for new district buildings, additions or renovations to district facilities.

For each project using the competitive bidding process, a timeline outlining the key dates shall be established. This timeline shall be published in appropriate publications.

The superintendent or designee shall establish a set of written qualifications based upon the requirements and expertise needed to meet the requirements of the project. This set of written qualifications shall be used to establish a list of qualified bidders for a particular project.

The superintendent or designee shall advertise the availability of project drawings and specifications and contractual terms and conditions to qualified contractors interested in competitive bidding.

Sealed bids from approved vendors shall be unconditionally accepted. All bidders shall submit with their bids a suitable security bond as required in specifications.

Sealed bids shall be opened in public on the timeline advertised.

The superintendent or designee shall take all bids under advisement, allowing ample time for careful consideration by the architect, the administration and the school district's attorney. The superintendent or designee shall reserve the right to accept or reject any or all bids or to waive technicalities.

Professional services are exempt from the competitive bidding process. Contracts and the associated fees for professional services such as engineering surveys, soil investigation and analysis, concrete testing, material testing, third party inspections, design and construction manager/general contractor (CMGC) shall be negotiated. Fees for these services must be competitive, with the specific fee structure to be negotiated based on pertinent, project-related factors.

The contract will be awarded in a timely manner consistent with the established timeline. The superintendent or designee shall sign all contracts under \$100,000. For contracts over \$100,000 the Board ~~shall pass a resolution that the bid has been accepted and~~ shall authorize the execution of a formal agreement with the contractor.

The district shall not enter into a construction contract unless an appropriation has been made for the project as required by law.

Adopted: February 28, 1978
Revised: November 19, 1968
Revised: October 19, 1977
Revised: November 11, 1978
Revised: April 25, 1984

Revised: May 23, 1984
Revised: June 8, 1994
Revised: June 11, 2003
Revised: January 14, 2009
Revised: June 10, 2009
Revised: May 11, 2011
Revised: October 28, 2015
Revised: March 9, 2022

LEGAL REFS.: C.R.S. 24-18-201 (interests in contracts)
C.R.S. 24-91-101 *et seq.* (construction contracts with public entities)
C.R.S. 24-92-103 (competitive sealed bidding)
C.R.S. 24-92-107 (prequalification of contractors)
C.R.S. 22-32-109 (Board of Education – specific duties)
C.R.S. 32-11-209 (1)(a) and (c) (additional administrative powers)
C.R.S. 38-26-101 (contractor defined)
C.R.S. 38-26-105 (contractor's bond – conditions)
C.R.S. 38-26-106 (contractor executes bond)

CROSS REFS.: BCB, School Board Member Conflict of Interest
DJE, Procurement Procedures
FEGB, Contractor's Affidavits and Guarantees

MEMORANDUM

DATE: March 9, 2022

TO: Board of Education

FROM: Dr. Don Haddad, Superintendent of Schools

SUBJECT: Approval of Contract Award for Longmont High School Waterline Replacement Project
Strategic Priority – Student and Staff Well-Being

RECOMMENDATION

That the Board of Education approve the execution of a formal agreement with CGRS, Inc. for a maximum amount of \$250,000.00 and an initial contract award of \$144,448.45 for the Longmont High School Waterline Replacement Project at Longmont High School. Further, to authorize Brian Lamer, Assistant Superintendent of Operations, to sign contract documents and initiate scope changes up to the approved amounts in accordance with Board of Education policy.

BACKGROUND

This project includes the replacement of main waterline piping and valves service for Longmont High School.

Bids were received on February 15, 2022 for ITB 2022-017, and CGRS, Inc. was selected for this project as the low bidder (see attached bid tabulation sheet).

The budget for this project has been established at \$250,000.00. Funding for the project is available from Capital funds. This item is being brought forth to comply with Board policy FEG stating any items over \$100,000 must have Board approval.



BID TABULATION SHEET
ITB 2022-017
WATER REPLACEMENT LINE - LONGMONT HIGH SCHOOL
FEBRUARY 15, 2022 2:00PM

Recommended for Award

	KCI - Kirsche Construction, Inc.	CGRS, Inc
Insurance	Y	Y
Immigrant Worker Regulations	Y	Y
Bid Bond (if applicable)	Y	Y
Statement of Qualifications	Y	Y
Addendum #1	Y	Y
Addendum #2	Y	Y
Signed Bid	Y	Y

TOTAL BASE BID:	\$ 195,553.00	\$ 144,448.45
-----------------	---------------	---------------

BID ALTERNATES			
ADD/ALT #1 (A/A.1)	Inlet Protection, if needed (price each)	\$ 402.50	\$ 350.00
ADD/ALT #2 (A/A.2)	Trenching Depth 6-10 feet, if encountered (price per LF)	\$ 49.25	\$ 35.00
ADD/ALT #3 (A/A.3)	ADA Concrete ramp replacement, with dowels into existing concrete: (price each)	\$ 6,170.90	\$ 4,350.00

BID SCHEDULE							
Item	Qty	Unit	Task	Price Each	Price Extended	Price Each	Price Extended
1	1	LS	Mobilization	\$ 53,524.96	\$ 53,524.96	\$ 13,100.00	\$ 13,100.00
2	1	EA	Connect at existing 4" valve, remove valve; reuse valve box if in good condition	\$ 2,530.00	\$ 2,530.00	\$ 5,400.00	\$ 5,400.00
3	1	EA	Connect to existing 4" line outside of building	\$ 2,530.00	\$ 2,530.00	\$ 5,400.00	\$ 5,400.00
4	147	LF	4" PVC CL 200 waterline in lawn, include turf& concrete walk demo & disposal	\$ 231.93	\$ 34,093.71	\$ 142.00	\$ 20,874.00
5	183	LF	4" PVC CL 200 waterline in asphalt/concrete HC ramp, include sawcut, demo & disposal	\$ 225.31	\$ 41,231.73	\$ 154.00	\$ 28,182.00
6	1	EA	4" 90 degree bend with kick block	\$ 2,236.75	\$ 2,236.75	\$ 2,740.00	\$ 2,740.00
7	1	EA	4" gate valve with box at North tie-in, run tracer wire to surface	\$ 3,201.31	\$ 3,201.31	\$ 3,700.00	\$ 3,700.00
8	1	EA	Blow-off valve	\$ 12,526.95	\$ 12,526.95	\$ 8,850.00	\$ 8,850.00
9	1	EA	Valve box for tracer wire run-up outside of building	\$ 759.00	\$ 759.00	\$ 714.00	\$ 714.00
10	1	EA	Replace bypass valve in water entry room, assume 3", all fittings included	\$ 2,875.00	\$ 2,875.00	\$ 4,000.00	\$ 4,000.00
11	1	EA	Replace master shut off valve in water entry room, assume 3", all fittings included	\$ 2,875.00	\$ 2,875.00	\$ 4,000.00	\$ 4,000.00
12	1	EA	Concrete walk replacement with dowels into existing	\$ 2,311.50	\$ 2,311.50	\$ 3,200.00	\$ 3,200.00
13	183	LF	Asphalt patch, match existing	\$ 99.23	\$ 18,159.09	\$ 92.15	\$ 16,863.45
14	1	EA	Concrete Curbhead replacement	\$ 2,093.00	\$ 2,093.00	\$ 725.00	\$ 725.00
15	1	LS	Sod and irrigation tubing & control wire repair	\$ 7,762.50	\$ 7,762.50	\$ 13,300.00	\$ 13,300.00
16	1	LS	Waterline disinfection, flushing, testing	\$ 2,645.00	\$ 2,645.00	\$ 2,300.00	\$ 2,300.00
17	1	LS	Gutter protection, waddles or rock socks	\$ 920.00	\$ 920.00	\$ 6,500.00	\$ 6,500.00
18	1	LS	Concrete washout, removal at completion	\$ 402.50	\$ 402.50	\$ 1,200.00	\$ 1,200.00
19	1	LS	Erosion control maintenance	\$ 1,150.00	\$ 1,150.00	\$ 1,250.00	\$ 1,250.00
20	1	LS	Repaint damaged pipe, walls in water room matching blue	\$ 1,725.00	\$ 1,725.00	\$ 2,150.00	\$ 2,150.00
TOTAL BID:				\$ 195,553.00	\$ 195,553.00	\$ 144,448.45	\$ 144,448.45

MEMORANDUM

DATE: March 9, 2022

TO: Board of Education

FROM: Dr. Don Haddad, Superintendent of Schools

SUBJECT: Approval of Change Order 1 to Construction Manager/General Contractor for Skyline HS Football Field Turf Conversion Project
Strategic Priority – Portfolio of 21st-century instructional focus schools and robust co-curricular opportunities

RECOMMENDATION

That the Board of Education approve Change Order 1 for \$501,953 to the Construction Manager/General Contractor (CM/GC) contract with JHL Constructors, Inc. for the Skyline HS Football Field Turf Conversion Project for a total contract value of \$1,484,953. Further, that the Board authorize Brian Lamer, Assistant Superintendent of Operations, to sign contract documents and initiate scope changes in accordance with Board of Education policy.

BACKGROUND

This Change Order includes the full contract for the conversion of the football field at Skyline HS to an artificial turf field.

The budget for the project has been established at \$1,500,000, as part of Capital funds. This item is being brought forth to comply with Board policy FEH stating any items over \$99,999 must have Board approval.

Original Agreement Amount	\$ 983,000.00
Previous change orders	\$ 0.00
Current change order	\$ 501,953.00
Total changes (previous + current)	\$ 501,953.00
New contract amount	\$ 1,484,953.00

MEMORANDUM

DATE: March 9, 2022

TO: Board of Education

FROM: Dr. Don Haddad, Superintendent of Schools

SUBJECT: Approval of Contracts for Teachers / Non-Renewal Notices for the 2022-2023 Academic School Year

RECOMMENDATION

That the Board of Education approve teacher contracts for all probationary and non-probationary teachers currently employed by St. Vrain Valley Schools with the exception of those listed below.

Probationary teachers not recommended for contracts for the 2022-2023 school year:

Name	Primary Job Title	Primary Work Location
Aguayo, Yesenia	Counselor	Northridge Elementary
Alford, Jennifer	Registered Nurse	Student Services
Backus, Sarah	Language Arts Teacher	Altona Middle
Baker, Kay	Math Teacher	Coal Ridge Middle
Ball Castro, Kimberley	ESL Teacher	Trail Ridge Middle
Barrell, JoAnna	Math Teacher	Erie Middle
Bartholomew Brown, Candice	Math Teacher	Altona Middle
Blamey, Matthew	Business Teacher	Longmont High
Cangilla, Madeline	5th Grade Teacher	Niwot Elementary
Cloud, Heidi	Gifted and Talented Teacher	Prairie Ridge Elementary
Dame, Diana	Language Arts Teacher	Silver Creek High
DePaolis-Metz, Justin	Vocal Music Teacher	Thunder Valley K-8
Ellis, Abigail	FOCUS/STEM Teacher	Thunder Valley K-8
Evans, Angela	Kindergarten Teacher	Grand View Elementary
Fitzgerald, Allison	ESL Teacher	Mountain View Elementary
Garza, Robert	Science Teacher	Westview Middle
Gurney, Acadia	Math Teacher	Sunset Middle

Heichelbech, Laura	Special Education Teacher	Thunder Valley K-8 / LaunchED
Hodges, Amber	Elementary Music Teacher	Fall River Elementary
Jackson, Amber	Kindergarten Teacher	Fall River Elementary
Johnson, Traci	6th Grade Teacher	Trail Ridge Middle
Johnson, Michael	Special Education Teacher	Centennial Elementary
Klauber, Eva	Math Teacher	Trail Ridge Middle
Koon, Erin	Counselor	Indian Peaks Elementary
Krebs, Suzanne	Literacy Teacher	LaunchED
Lechien, Renata	Kindergarten Teacher	Legacy Elementary
Lohndorf, David	Science Teacher	Sunset Middle
Martin, Christine	Special Education Teacher	Alpine Elementary
Martinez, Olivia	Art Teacher	Altona Middle
McMurtry, Elizabeth	5th Grade Teacher	Soaring Heights PK-8
Meyer, Jonathan	Special Education Teacher	Eagle Crest Elementary
Miloradovich, Elizabeth	6th Grade Teacher	Mead Middle
Moulton, Katharine	1st Grade Teacher	Niwot Elementary
Mullen, Allyson	Counselor	Sanborn Elementary
Mullens, Christopher	2nd Grade Teacher	Hygiene Elementary
Nickal, Haley	Special Education Teacher	Altona Middle
Nixon, Alice	3rd Grade Teacher	Indian Peaks Elementary
Petrovich, Rebecca	Math Teacher	Lyons Middle / Senior
Plomondon, Karen	Math Teacher	Coal Ridge Middle
Porter, Lacey	3rd Grade Teacher	Sanborn Elementary
Quick, Kelsey	Special Education Teacher	Rocky Mountain Elementary
Quintana, Zenia	Counselor	Longs Peak Middle
Raby, Austin	3rd Grade Teacher	Thunder Valley K-8
Rix, Robert	Art Teacher	Sanborn Elementary
Roberts, Kelcey	Math Teacher	Niwot High
Sabatka, Zachary	Language Arts Teacher	Westview Middle
Sauseda, Victoria	6th Grade Teacher	Thunder Valley K-8
Sill, Heather	3rd Grade Teacher	Soaring Heights PK-8
Stickle, Jacob	Social Studies Teacher	Niwot High
Szymanski, Amy	Registered Nurse	Student Services
Taylor, Paige	Science Teacher	Skyline High
Troup, Victoria	FOCUS/STEM Teacher	Thunder Valley K-8
Trout, Kristine	Kindergarten Teacher	LaunchED
Winslow, Philip	Counselor	Frederick High